

J SERIES**60,000 BTU****BZ33-MSC60D-J****BZ33-INV60OUT2-J****FEATURES**

- Free match
- Auto restart function
- Crank case & basepan heater included
- Auto defrost
- 24-Hour timer
- 208/230V

FREE MATCH

Versatile outdoor inverter can match with a Breeze33 inverter coil or other brand indoor equipment.

AUTO DEFROST

In low temperatures, the auto defrost feature will keep the evaporator from freezing.

AUTO RESTART

In the event of a power failure, the unit will remember and restart the previous settings when power returns.



INDOOR/OUTDOOR A-COIL HEAT PUMP SYSTEM

UNIT	ID NO.	MODEL
Indoor	.3586773	BZ33-MSC60D-J
Outdoor	.3592667	BZ33-INV60OUT2-J

SPECIFICATIONS

Series	J
Thermostat Type	24V Thermostat
Warranty	Yes*

COOLING

Capacity (Range)	BTU/H	45,000 (13,400 - 54,000)
Input	W	4,500
Rated Current	A	19.56
EER2	BTU/W	10
SEER2	BTU/W	15.2

HEATING

Capacity (Range)	BTU/H	55,000 (10,800 - 60,000)
Input	W	5,373
Rated Current	A	24.6
COP	W/W	3
HSPF2-4	BTU/W	9.2
HSPF2-5	BTU/W	7.6

COMPRESSOR

Type	Rotary	
Capacity	BTU/H	46,335
Input	W	3,770
Rated Current (RLA)	A	26.2
Refrigerant Oil/Charge	mL	VG75/1300

REFRIGERANT PIPE

Design Pressure	PSIG	550 / 340
Refrigerant Type	Oz	R410A
Refrigerant Precharge	Ft	25
Additional Charge/Ft	Oz	0.69
Liquid	In	3/8
Gas	In	7/8
Max. Refrigerant Pipe Length	Ft	213-5/16
Max. Difference in Level	Ft	98-3/8

*7 years. 10 years if product is registered within thirty days from installation.

OPERATING TEMPERATURE

Indoor (Cooling/Heating)	°F	60~90 / 32~86
Outdoor (Cooling/Heating)	°F	5~122 / -22~75

INDOOR UNIT DIMENSIONS

Product (W x D x H)	In	24-1/2 x 21 x 28
Packing (W x D x H)	In	27-3/4 x 26-3/16 x 30-5/16
Weight (Net/Gross)	Lbs	86.64 / 98.33

OUTDOOR FAN MOTOR

Input	W	126
Output	W	85
RLA	A	1.2
Speed	r/min	850 / 750 / 650
Air Flow	CFM	4,500
Noise Level	dBA	62

OUTDOOR UNIT DIMENSIONS

Product (W x D x H)	In	37-1/2 x 16-3/8 x 52-1/2
Packing (W x D x H)	In	43-1/8 x 19-1/2 x 58-1/4
Weight (Net/Gross)	Lbs	239.86 / 271.61

ELECTRICAL DATA

Min. Circuit Ampacity	A	40
Max. Fuse	A	50
Power Supply	Ph/V/Hz	1 / 208/230 / 60



FREE MATCH GUIDE

**Third Party
Outdoor Unit**



24V Comm
↔

**Breeze33 J Series
Indoor Unit**

Universal
24V + 485 Indoor Unit



Wall Mount Air Handler (18K - 36K)

24V or 485
↔

**Breeze33 J Series
Outdoor Unit**

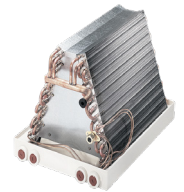
Hyper 24V + 485



(12K - 60K)

24V Comm
↔

**Third Party
Indoor Product**



A-Coil (18K - 48K)

Breeze33 inverter 24V combined both 485 and 24V control are compatible with both Breeze33 system and third party indoor and outdoor units integrated into the traditional 24V system. Ratings are for Breeze33 outdoor and indoor J series match up.