

**J SERIES****30,000 BTU****BZ33-MSC36C-J****BZ33-INV30OUT2-J****FEATURES**

- Free match
- Auto restart function
- Crank case & basepan heater included
- Auto defrost
- 24-Hour timer
- 208/230V

**FREE MATCH**

Versatile outdoor inverter can match with a Breeze33 inverter coil or other brand indoor equipment.

**AUTO DEFROST**

In low temperatures, the auto defrost feature will keep the evaporator from freezing.

**AUTO RESTART**

In the event of a power failure, the unit will remember and restart the previous settings when power returns.



# INDOOR/OUTDOOR A-COIL HEAT PUMP SYSTEM

UNIT	ID NO.	MODEL
Indoor	.3586772	BZ33-MSC36C-J
Outdoor	.3586765	BZ33-INV300OUT2-J

## SPECIFICATIONS

Series	J
Thermostat Type	24V Thermostat
Warranty	Yes*

## COOLING

Capacity (Range)	BTU/H	24,000 (10,000 - 28,400)
Input	W	2,247
Rated Current	A	9.43
EER2	BTU/W	10.7
SEER2	BTU/W	16.5

## HEATING

Capacity (Range)	BTU/H	25,000 (9,600 - 33,400)
Input	W	2,233
Rated Current	A	9.3
COP	W/W	3.28
HSPF2-4	BTU/W	9.5
HSPF2-5	BTU/W	7.7

## COMPRESSOR

Type	Rotary	
Capacity	BTU/H	26,409
Input	W	2,085
Rated Current (RLA)	A	15
Refrigerant Oil/Charge	mL	Ester Oil VG74 670

## REFRIGERANT PIPE

Design Pressure	PSIG	550 / 340
Refrigerant Type	Oz	R410A
Refrigerant Precharge	Ft	25
Additional Charge/Ft	Oz	0.69
Liquid	In	3/8
Gas	In	3/4
Max. Refrigerant Pipe Length	Ft	98-3/8
Max. Difference in Level	Ft	65-5/8

\*7 years. 10 years if product is registered within thirty days from installation.

## OPERATING TEMPERATURE

Indoor (Cooling/Heating)	°F	60~90 / 32~86
Outdoor (Cooling/Heating)	°F	5~122 / -22~75

## INDOOR UNIT DIMENSIONS

Product (W x D x H)	In	17-1/2 x 21 x 18
Packing (W x D x H)	In	20-1/2 x 26-3/16 x 20-1/4
Weight (Net/Gross)	Lbs	42.77 / 52.03

## OUTDOOR FAN MOTOR

Input	W	150
Output	W	120
RLA	A	1.4
Speed	r/min	950 / 700 / 500
Air Flow	CFM	3,000
Noise Level	dBA	63.5

## OUTDOOR UNIT DIMENSIONS

Product (W x D x H)	In	37-1/4 x 16-1/8 x 31-7/8
Packing (W x D x H)	In	42-15/16 x 19-11/16 x 34-7/8
Weight (Net/Gross)	Lbs	136.69 / 145.5

## ELECTRICAL DATA

Min. Circuit Ampacity	A	20
Max. Fuse	A	35
Power Supply	Ph/V/Hz	1 / 208/230 / 60



**FREE MATCH GUIDE**

**Third Party  
Outdoor Unit**



24V Comm  
↔

**Breeze33 J Series  
Indoor Unit**

Universal  
24V + 485 Indoor Unit



Wall Mount Air Handler (18K - 36K)

24V or 485  
↔

**Breeze33 J Series  
Outdoor Unit**

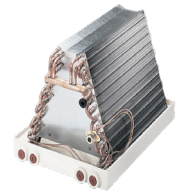
Hyper 24V + 485



(12K - 60K)

24V Comm  
↔

**Third Party  
Indoor Product**



A-Coil (18K - 48K)

Breeze33 inverter 24V combined both 485 and 24V control are compatible with both Breeze33 system and third party indoor and outdoor units integrated into the traditional 24V system. Ratings are for Breeze33 outdoor and indoor J series match up.