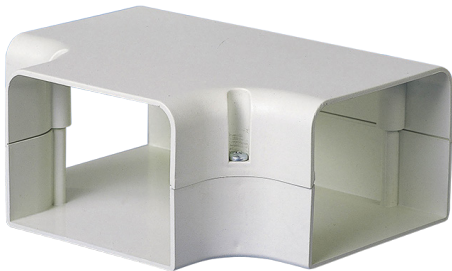


LCTEE



FEATURES

- UV-resistant
- To reduce a multi-split unit duct to single-unit installation
- Minimum -4°F to maximum 140°F in a static position
- Protects the linesets and drain hoses against deterioration due to climatic conditions (UV radiation) and contributes to reducing energy consumption

SPECIFICATIONS

Model	ID No.	Compatible Line Cover	Size
BZ33-LC100TEE	.3538223	BZ33-LC100	4" x 3"
BZ33-LC150TEE	.3538224	BZ33-LC150	6" x 3.25"

Paintable: Paint manufacturers recommend the use of polyurethane coating to paint PVC and ASA products and their recommendations should be followed. Flexible products (PE or PP material) are not paintable—the flexible material will not allow paint to adhere. It is recommended to paint in bright colors only. Clean and degrease before painting.